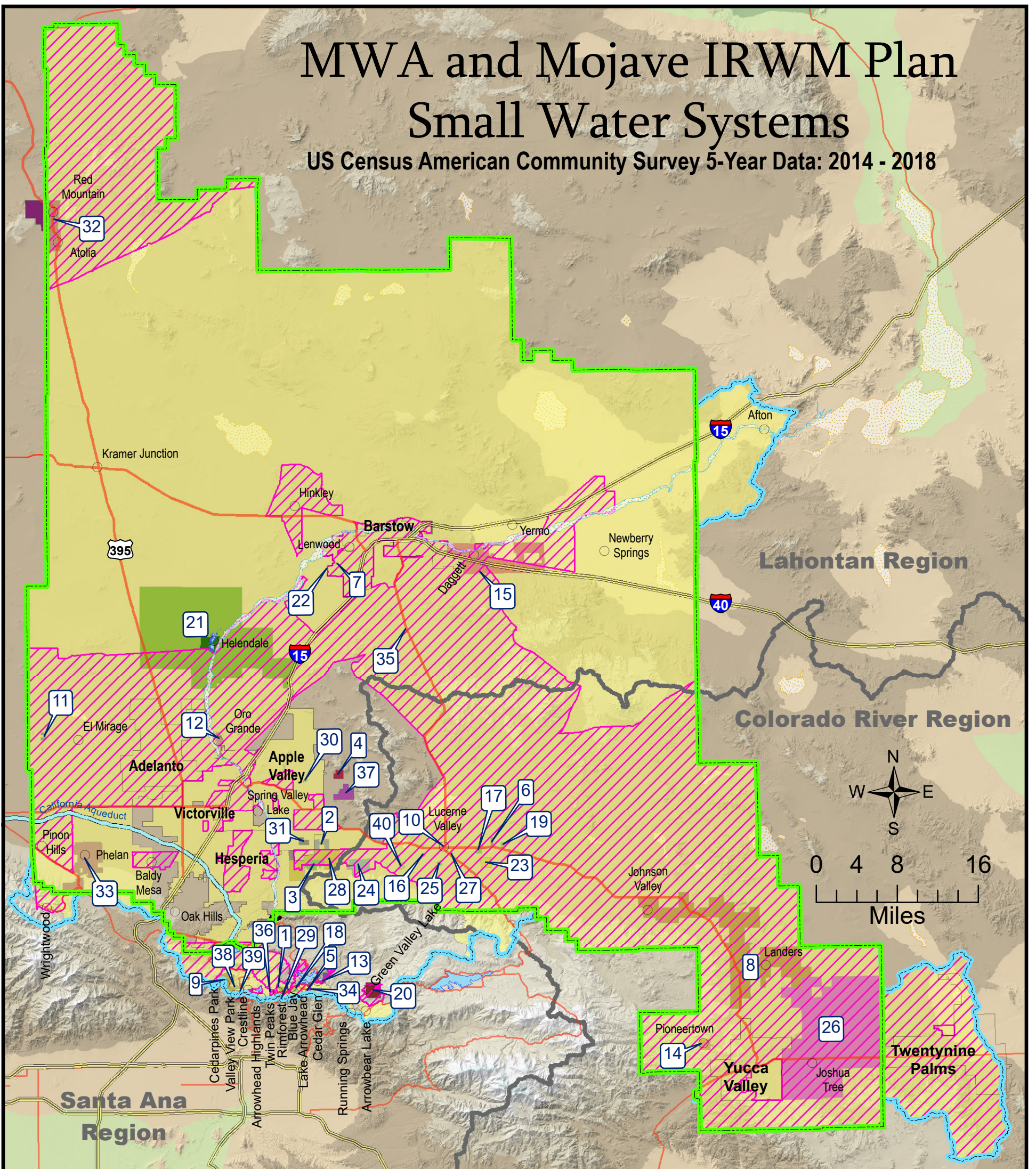


MWA and Mojave IRWMP Plan Small Water Systems

US Census American Community Survey 5-Year Data: 2014 - 2018



- | | | |
|--|---|--|
| MojaveWater Agency | 13. County Service Area 70 CG | 27. Lucerne Vista Mutual Water Company |
| Mojave IRWMP Boundary | 14. County Service Area 70 W4 | 28. Mariana Ranchos County Water District |
| 1. Alpine Water Users Association | 15. Daggett Community Services District | 29. Mountain Pioneer Mutual Water Company |
| 2. Apple Valley Foothill County Water District | 16. Desert Dawn Mutual Water Company | 30. Navajo Mutual Water Company |
| 3. Apple Valley Heights County Water District | 17. Desert Springs Mutual Water Company | 31. Rancheritos Mutual Water Company |
| 4. Apple Valley View Mutual Water Company | 18. Dogwood Blue Jay Canyon Improvement Association | 32. Rand Communities Water District |
| 5. Arrowhead Villas Mutual Service Company | 19. Gordon Acres Water Company | 33. Sheep Creek Water Company |
| 6. Bar H Mutual Water Company | 20. Green Valley Mutual Water Company | 34. Sky Forest Mutual Water Company |
| 7. BarLen Mutual Water Company | 21. Helendale Community Services District | 35. Stoddard Valley Mutual Water Company |
| 8. Bighorn-Desert View Water Agency | 22. Hi Desert Mutual Water Company | 36. Strawberry Lodge Mutual Water Company |
| 9. Cedarpines Park Mutual Water Company | 23. Jubilee Mutual Water Company | 37. Thunderbird County Water District |
| 10. Center Water Company | 24. Juniper-Riviera County Water District | 38. Valley of Enchantment Mutual Water Company |
| 11. Chamisal Mutual Water Company | 25. Lucerne Valley Mutual Water Company | 39. Valley View Park Mutual Water Company |
| 12. County Service Area 42 | 26. Joshua Basin Water District | 40. West End Mutual Water Company |

Severe Disadvantaged Community (ACS 2014-18) MHI ≤ \$42,737 Disadvantaged Community (ACS 2014-18) MHI ≤ \$56,982